



# GAT MONTHLY MEMBERSHIP PROGRESS REPORT

Results as of: 6/30/2023

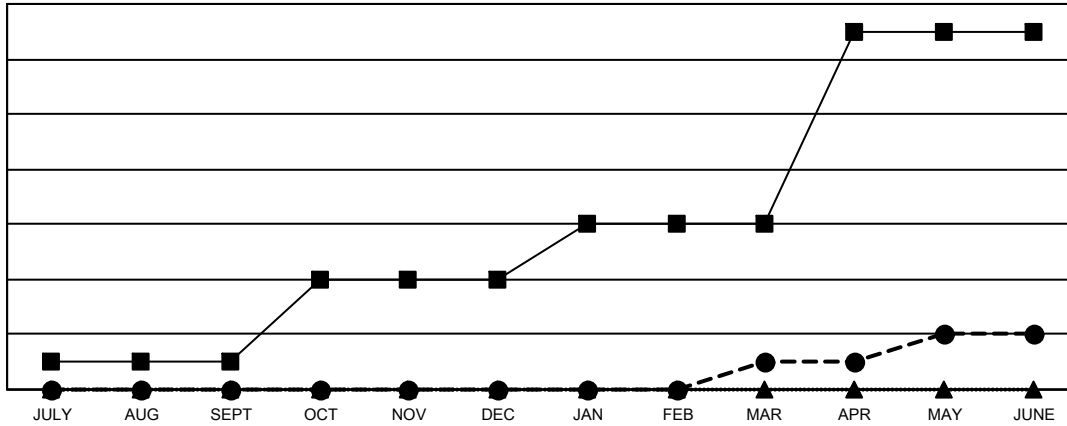
Multiple District 5

LOCATION: NORTH DAKOTA

Clubs			
RESULTS FOR 2022-2023			
QUARTER	NEW CLUB GOAL	NEW CLUBS	DROPPED CLUBS
JULY/AUG/SEPT	1	0	1
OCT/NOV/DEC	3	0	1
JAN/FEB/MAR	2	1	0
APR/MAY/JUNE	7	1	7

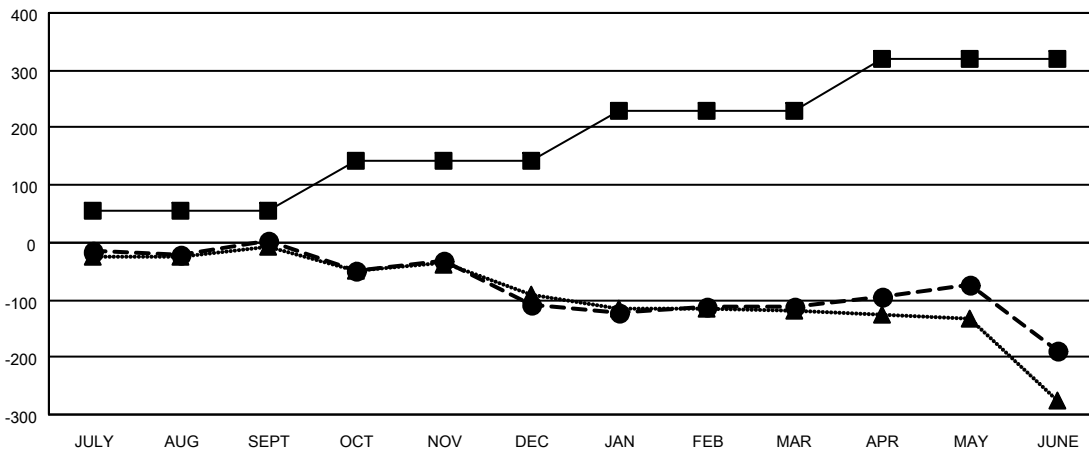
Members			
RESULTS FOR 2022-2023			
QUARTER	MEMBER GROWTH NET GOAL	MEMBER GROWTH ACTUAL	DROPPED MEMBERS ACTUAL (including transfers)
JULY/AUG/SEPT	55	136	99
OCT/NOV/DEC	88	133	219
JAN/FEB/MAR	86	148	140
APR/MAY/JUNE	91	222	270

GOALS AND ACTUAL NEW CLUBS CUMULATIVE



- CURRENT YEAR GOALS FOR NEW CLUBS
- CURRENT YEAR ACTUAL NEW CLUBS
- ▲- LAST YEAR ACTUAL NEW CLUBS

GOALS AND ACTUAL MEMBERS CUMULATIVE



- MEMBER GROWTH NET GOAL
- MEMBER GROWTH ACTUAL
- ▲- LAST YEAR MEMBERSHIP ACTUAL

DROPPED CLUBS: 9	155 CLUBS OF 295 ADDED 1 OR MORE NEW MEMBERS	<b>GENDER DISTRIBUTION</b>
<b>DROPPED MEMBERS</b>	<a href="#">CLICK HERE FOR CUMULATIVE MEMBERSHIP DATA</a>	MALE 4,398 (69.71%)
DECEASED 91		FEMALE 1,910 (30.27%)
CLUB CANCELLED 82		NON BINARY 0 (0.00%)
OTHER 555		PREFER NOT TO ANSWER 1 (0.02%)
<b>TOTAL 728</b>		<b>TOTAL FAMILY UNIT MEMBERS 978</b>
		<b>FAMILY MEMBERS PAYING HALF DUES 494</b>